

IP Camera Recorder

36CH Recording Software

User Manual



CONTENT

I. Preface.....	3
II. System Requirements	3
III. Program Install and Uninstall	4
A. Program Install.....	4
B. Uninstall.....	7
IV. Quick Setup before starting.....	8
A. Connect to IP Cameras or Video Servers.....	8
B. Set up HDD for Recording	12
V. Live Screen	14
A. Live View.....	14
B. Function Buttons.....	15
C. Function Button in Bottom Column.....	16
D. E-PTZ Control of Panorama View	17
VI. Configuration.....	18
A. System Setup : Server, Multi-monitor, Screen Pattern, Log	19
B. Channel Setup: General	28
C. Channel Setup: Schedule, Motion Detection, I/O	31
D. Channel Setup: PTZ, Panorama.....	36
E. User Setup.....	41
F. Disk Setup	43
G. E-Map Setup	43
H. Detect Setup	46
I. Report	50
VII. Video Playback	51
A. Playback.....	51
B. Export Video	54
VIII. Remote Monitor	56
A. Live Monitoring via Web Browser	56
B. Web Browser Setup and ActiveX	58
C. Live Monitoring via Remote Lite.....	62
IX. Configure Tool.....	65
A. Channel.....	65
B. System	65
C. Backup	67
X. Software Specification	68

I. Preface

IPCamera Recorder is a video recording software which supports IP Camera and Video Server. IPCamera Recorder can be used to monitor the real-time video, record and playback the video on PC.

IPCamera Recorder provides 5 different ways to record the video, including normal recording, schedule recording, motion-triggered recording, alarm-triggered recording and manual recording. E-Map and Multi-Monitor are also built-in within IPCamera Recorder.

The user can also use this software to distribute the HDD space, and separate the video files from the most important channels and saving them directory, keeping crucial video data for longer time

IPCamera Recorder can be accessed via web browser or by Remote Lite software, sharing live video remotely.

II. System Requirements

1. Minimum Requirements


- CPU: Intel Pentium 4 2.0G
- Memory: 1GB
- VG. card: 128MB External Graphic Card or above
- Monitor Resolution: 1024 x 768
- OS: Windows 7/ Windows Vista/ XP / 2000
- File System: NTFS

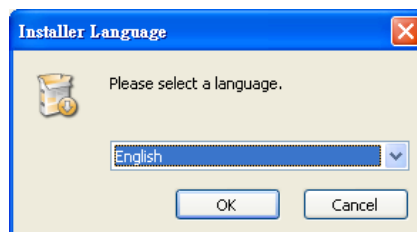
2. Suggested Requirements

- CPU: Intel Core 2 Quad Q6600 or above
- Memory: 2GB or above
- VG. card: 256MB External Graphic Card or above
- Monitor Resolution: 1024 x 768
- OS: Windows 7/ Vista/ XP/ 2000
- File System: NTFS

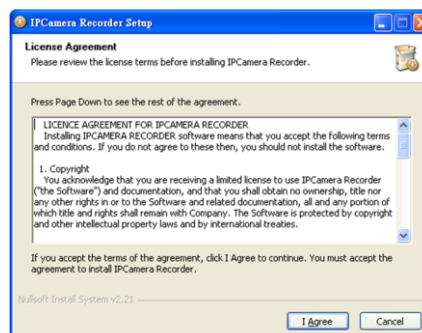
III. Program Install and Uninstall

A. Program Install

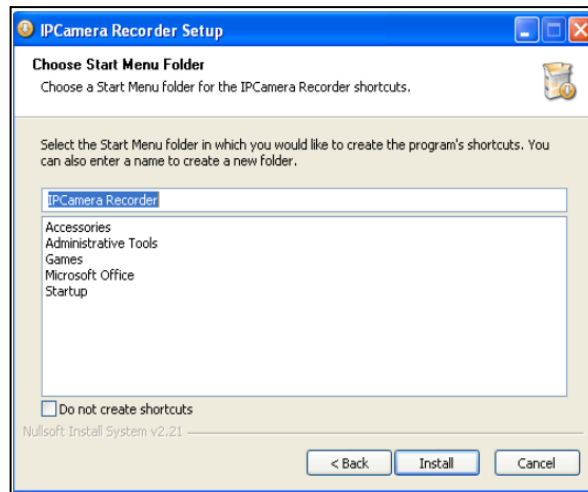
1. To install IP Camera Recorder, double click the execute file icon .
2. Please select the language for the installation procedure.



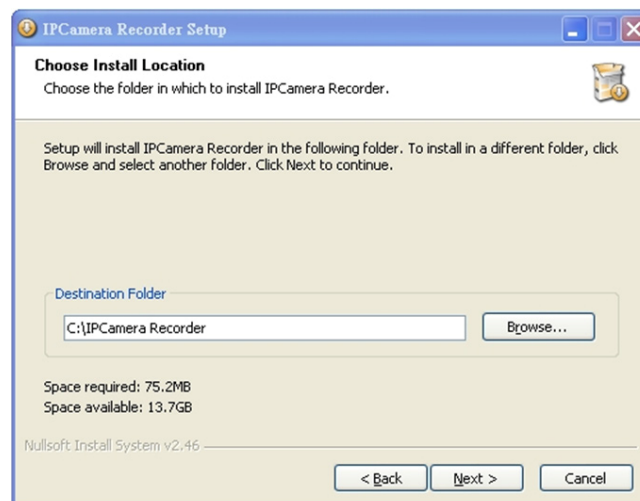
3. Please read the License Agreement. Select “I Agree” to continue installation.



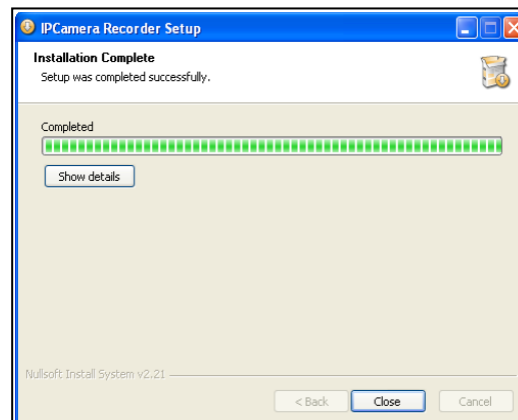
4. The default installation directory is “C:\IPCamera Recorder”. Click "Browse" to change the directory.



5. The default folder name in start menu is “IPCamera Recorder”. You can also edit it as you like. Click “Install” to start the installation.

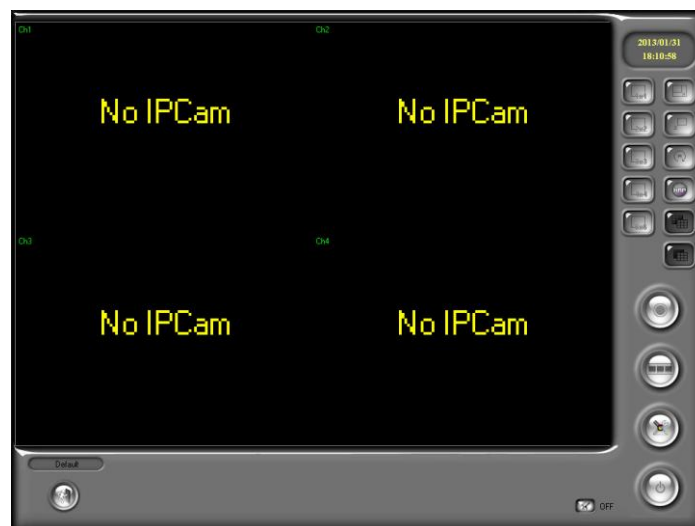




6. After the installation finishing, click “Close” to close the procedure of the installation.



7. To start the program, follow the path: “Start”->”Program”->”IPCamera Recorder ”->”IPCamera Recorder”.

For Windows Vista or Win7 users, right-click on the short cut icon of IPCamera Recorder or the main program, and select “Run as administrator” to start the program.



8. An additional monitor screen might be seen if a second monitor is connected.
9. On the IPCamera Recorder, if the first and the second live-viewing screens are the same, the number of the channels displayed on the screen will be different.
10. If multi-monitor is not supported by the PC, the multi-monitor mode  and the multi-monitor ON/OFF  will be disabled.

B. Uninstall

1. To uninstall the program, select "Start" -> "Program" -> "IPCamera Recorder" -> "Uninstall" to remove the program.



IV. Quick Setup before starting

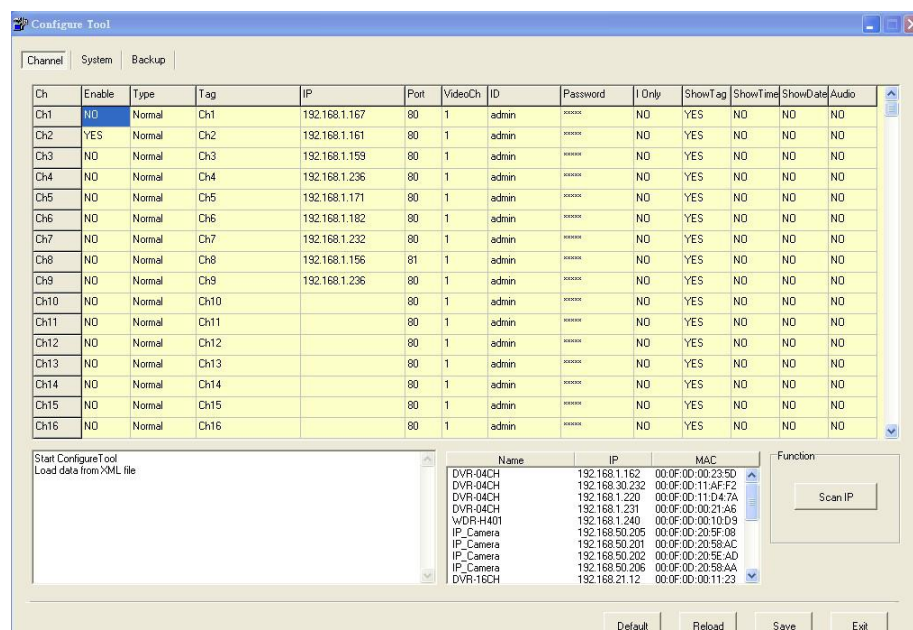
A. Connect to IP Cameras or Video Servers

Before practicing any operation, you have to connect IP cameras or video servers.

1. Configure Tool


Configure tool is a independent application that enables users to connect with the IP cameras/ video servers and set up the channel list without start the IP Recorder main program.


a. Select "Start" -> "Program" -> "IPCamera Recorder" -> "Tools" -> "Configure tool". In Windows Vista/ Win7, right-click on the desktop shortcut or configure tool, then select "Run as administrator" to start the program.



- b. "IP Installer" is built into the "Configure tool", which can scan the IP devices under the LAN. When Configure tool stretches, it starts searching automatically. To re-search devices, click "Scan IP".
- c. Find the IP camera or video server you would like to connect, drag and drop it to the channel listed above, and key-in the username & password of the device.
- d. After finishing the configuration, click "Save".

2. Channel Setup Page of the IPCamera Recorder

- a. Start IPCamera Recorder. Click the configuration button  on the center of the setup page. The software will ask you to log in. The default username and password are both "admin".



- b. Click the  icon to enter the IP camera / video server set up icon page.



c. There are 36 channel icons listed on the left side. Click the channel you want to set up.

d. In the “basic setting” column, key in the IP camera IP address, port, and username & password. The Channel tag can be any phrase word to be displayed on the top of live view. Select a streaming of IP camera.



Click  to test and connect with the device. If you click , the webpage browser will be started to access the IP camera.



☒ Enable Channel Channel Type: Normal

Basic Setting


Channel Tag: Ch1

IP: 60.251.82.54

Port: 8125 Streaming: 1

ID: admin

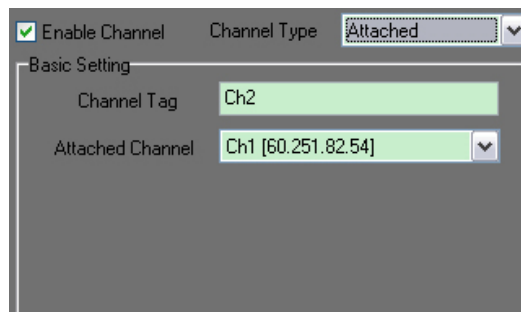
Password: xxxxxx

Note: Please key in the IP address without any protocol. For example, if you key-in "http://60.251.82.54:8125", it will display a “connection fail” message.

e. You can appoint one or several channels as attached channels of a normal channel, and see the same live view as the normal channel. The attached channel is not physically linked to any camera, so it doesn't increase the bandwidth loading.

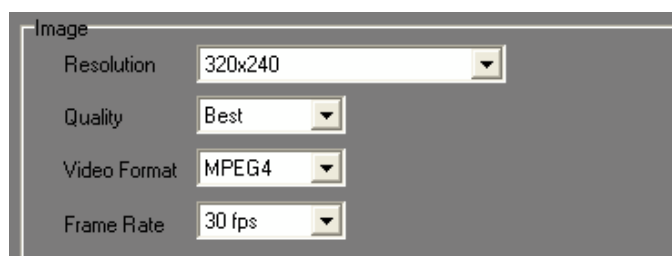
To setup an attached channel, select "Attached" of “channel type”, and appoint the channel number you want to attach to.



A practical usage of the attached channel is the zoom function. You can operate the digital zoom for each attached channel respectively. With this function, you can monitor different spots on the attached channels. Take the picture below for instance, the attached channels--CH2, 3 and 4 show three different zones of the CH1, which is the normal channel.



f. After the channel is successfully connected, you can adjust the image resolution, quality, video format, and frame rate in the "Image" column. The options displayed here depend on the connected device.




f. Finally, click on  to save your settings.

B. Set up HDD for Recording

If you want to record the video on the PC, we recommend to setup the HDD first. If you don't adjust any options, the IPCamera Recorder will apply the default setting (Based on the HD space).



1. Start the IPCamera Recorder. Click the  icon to enter the setup page. The software will ask you to log in. **Both default username and password are both "admin".**



2. Click the  icon to enter the Disk setup page.


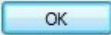
3. The total available space, and the estimate max recording time are shown on the top.

Total Available Volume	30,762	MB
Total BitRate	65.07	KByte/Sec 228.78 MByte/Hour
Approximate Total Record Time	36 day 18 Hour 20 min 23 sec	


4. The default saving directory is the folder named "Record" under the path where the software is installed. You can also check the free disk space here.

Path	Used(MB)	Free(MB)	Available(MB)	ReadOnly
C:\Program Files\IPCamera Recorder\Record	0	3,489	No Limitation	N
		0	No Limitation	N





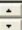

If you want to add a new recording path, click the  button, set the directory, and click  button to complete the setting. You can delete an



existing path by selecting it and click the  button.

5. The up and down buttons  /  are used to decide the priority sequence of the recording path. If the disk space of the first path is full, the recording video will be saved to the second path.

6. Selecting the "Available (MB)" box of one recording path will display the adjusting buttons  / . You can click the two buttons to adjust the space limitation for recording, or key-in the number by keyboard. The default value is "No limitation" that means the recording file will be saved continuously under the path until the disk is full.

Path	Used(MB)	Free(MB)	Available(MB)	ReadOnly
D:\IPCcamera Recorder\Record	961	4,243	1,024  	N
		0	No Limitation	N

7. By enabling the "Keep video days" function, the video will be automatically deleted after the given days. Meanwhile, the estimate max recording time above will change according to the days setting.

Storage

☐ Keep Video Days days





8. Finally, click on  to save your settings.

9. If you prefer the old files to be overwritten when the disk is full ,please refer to "[Auxiliary Functions](#)" on the system setup page.











V. Live Screen





A. Live View

1. On split screen view, double-click on one of the screens, the selected channel will switch into a single screen view.
2. In every activated channel, you can see three little  icons on the bottom-right.
 -  It will light when the channel is recording.
 -  It will light when the channel detects motion.
 -  It will light when the alarm on the channel has been triggered.


B. Function Buttons


1.  : Split screens.
2.  : Single screen.
3.  : Switch to full Screen mode. To exit the full screen mode, press Esc or right-click the mouse.
4.  : Minimize the program into system tray.
5.  : Channel auto swap. You can change the swap order and dwell time in the “screen setup” column.
6.  : Call out E-Map.
7.  : Distribute the channels into two monitors. Each monitor displays one channel.
8.  : Enable/Disable multi-monitor.
9.  : Manual recording. Press it to start recording immediately. Click the button again to stop recording.
10.  : Call out recorded video playback menu.


11.  : Pop-out configuration page.
12.  : Exit the program

C. Function Button in Bottom Column

Note: some icons or control panels only appear when the live view is displayed in single channel.

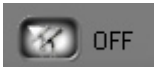
1.  : Log out the system.

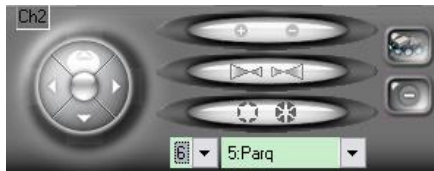
2.  : Digital Zoom Control Panel. Pull the bar to adjust the zoom percentage, and drag the red frame to the area you prefer. The area circled by the red frame will show on the live view.

3.  : I/O switch. IPCamera Recorder supports control up to 4 Digital.

In / Digital Out devices. Please refer to "**Output**" setup column for more.

4.  : Chatting switch. Click on to speak from PC to IP Camera.

5.  : Broadcast switch. Click on to speak from PC to all IP cameras connected. Note: To receive audio form IP Camera to PC, please refer to "**audio**" column.



6. : PTZ controller panel.



a. : Zoom in/ zoom out



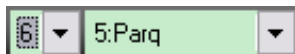
b. : Focus in/ focus out



c. : Iris open/ Iris close. The bigger the iris, the more light the camera can receive.



d. : Use the four-direction arrows to move the view.



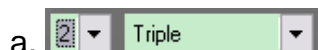
e. : The left number represents the moving range for the four-direction arrows. The right list is the preset point list. By selecting one of them the view will move to the given point.




f. : Start/ stop auto patrol. When auto patrol starts, the view will start patrolling according to your patrol group settings on the camera.


D. E-PTZ Control of Panorama View

When connecting to a hard-decoding fisheye camera, you can choose the split screen pattern and the camera view.





a. Use the drop down menu to select a screen pattern, for example, "triple" means one flat panorama view with 2 sub screens for applying E-PTZ. The number on the left represents the total sub screen number that you're controlling.




- b.  After you select a screen pattern, use the 4-direction arrows to adjust the view of sub screens. The controlled sub screens will be indicated on a red frame.

- c.  Use the "+" "-" to zoom in / zomm out the view of sub screens. You can also adjust the zoom by scrolling the mouse central wheel. The controlled sub screens will be indicated on a red frame.

VI. Configuration


 Click the  button; it will call out the setup page. The software will ask you to log in. Both default username and password are both "admin".

On the top right of the setup page, you can see three icons:

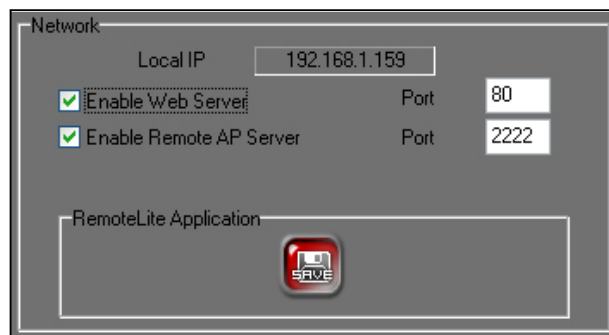
-  : Call out the virtual keyboard.
-  : Save all the settings.
-  : Leave the configuration page.

A. System Setup : Server, Multi-monitor, Screen Pattern, Log



Click the  button to enter system setup page.

1. Network

A screenshot of a network configuration window titled "Network". It has a grey background and a white border. Inside, there's a "Local IP" field with the value "192.168.1.159". Below it are two checked checkboxes: "Enable Web Server" and "Enable Remote AP Server". To the right of each checkbox is a "Port" label and a text box. The "Web Server" port is "80" and the "Remote AP Server" port is "2222". At the bottom, there's a "RemoteLite Application" label and a large empty text box. A red "SAVE" button is located at the bottom right of the text box.

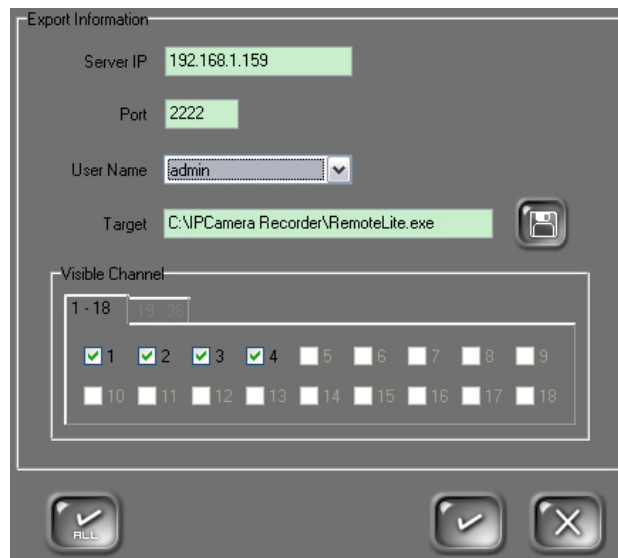
a. Web Server: Enable the web server and assign a port. The user can use webpage browser on another PC to watch the live video.

b. Remote AP Server: Enable remote AP server and assign a port. The user can use Remote Lite software on another PC to watch the live video.



Click RemoteLite Application column  to export the software.

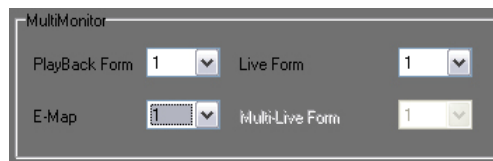
To see the detailed instruction about how to operate webpage browser and RemoteLite Application to connect with the local server, please refer to the chapter "[Remote Monitor](#)".



The 'Export Information' dialog box contains the following fields and controls:

- Server IP: 192.168.1.159
- Port: 2222
- User Name: admin (dropdown menu)
- Target: C:\IPCamera Recorder\RemoteLite.exe (with a file icon button)
- Visible Channel: A section with a range selector '1 - 18' and a list of checkboxes for channels 1 through 18. Channels 1, 2, 3, and 4 are checked.
- Buttons at the bottom: 'ALL' (with a checkmark icon), a confirmation button (with a checkmark icon), and a cancel button (with an 'X' icon).

2. Multi Monitor



The 'MultiMonitor' dialog box contains the following controls:

- PlayBack Form: 1 (dropdown menu)
- Live Form: 1 (dropdown menu)
- E-Map: (icon button)
- Multi-Live Form: 1 (dropdown menu)

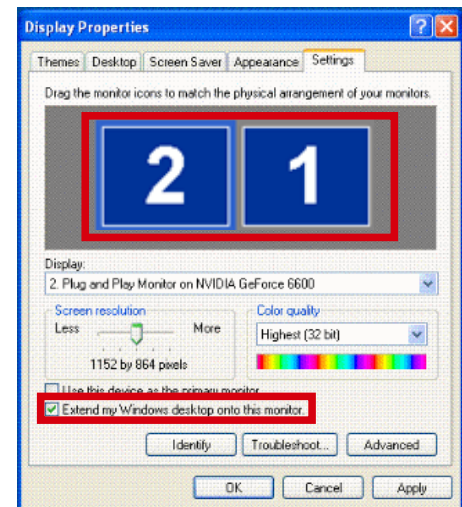
If your PC is connected to Multi-Monitors, you can select what is displayed on different monitors. The function only works when the PC's graphic card supports multi-monitors and is connected to more than one monitor.

Depending on your graphic card, you may need monitors with different interface. Most graphic cards supporting Multi-Monitors are D-SUB + DVI interface. You have to connect a D-SUB monitor and a DVI monitor. Some graphic cards support DVI + DVI interface, or D-SUB + DVI interface with a DVI to D-SUB connector. In those situations you can connect with two DVI monitors or two D-SUB monitors.

When using multi-monitors at the first time, to make them display correctly, adjust the display properties and reboot the PC after connecting the multi-monitors.

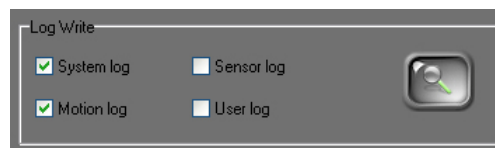
a. Right-click desktop -> Display Properties
-> Settings.


b. Click the disabled monitor number and tick "Extent my Windows desktop onto this monitor".



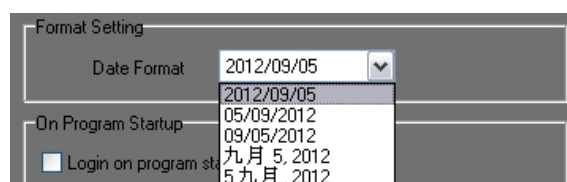
c. Drag and drop the monitor icon to correspond the actual monitor position.

3. Log Write



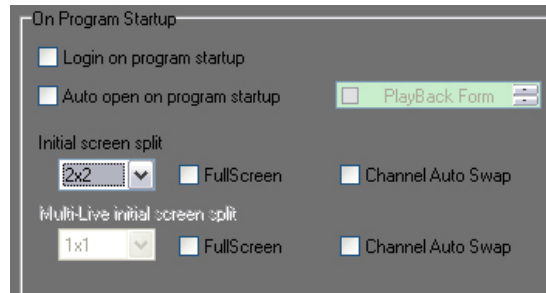
Tick the type of log you want to keep. Click the  button to see the log.

4. Format Setting



IPCamera Recorder provides several date display format. Select one as you like.

5. On Program Startup



In this column, you can adjust the initial display option that to be executed at every time IPCamera Recorder startup.

a. Login on program startup: When the option is ticked, IPCamera Recorder will ask you to login once the program starts. (On the contrary, the program asks for login when you try to enter the configuration page if this option is not ticked.)

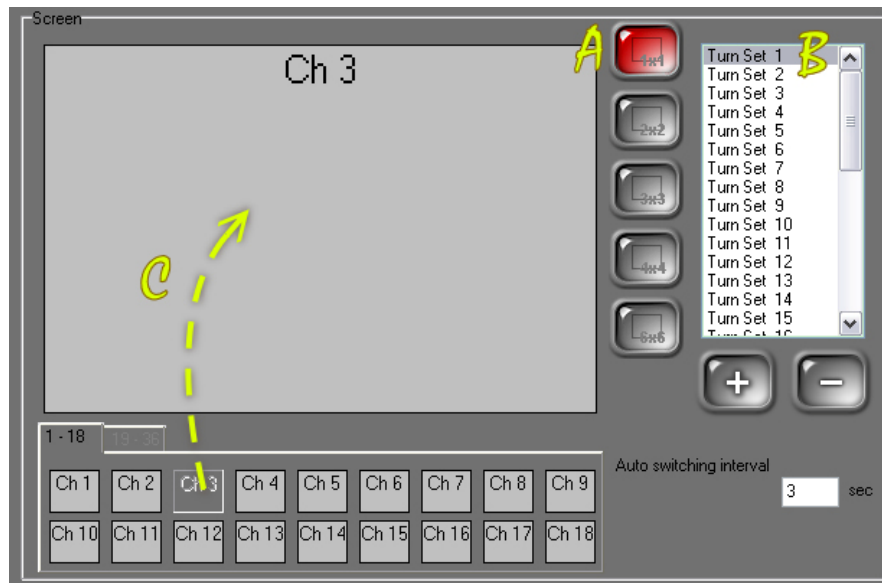
b. Auto open on program startup: Select if you prefer the playback window, E-map window, or multi-live window be displayed when the program starts.

c. Initial screen split: Select the screen pattern that you will see when the program starts.

6. Screen setup

You can customize the channel swap order. IPCamera Recorder provides single channel swap and split screen swap, and they can be set up respectively.


- Single channel pattern



a. Press 1x1 single channel icon.

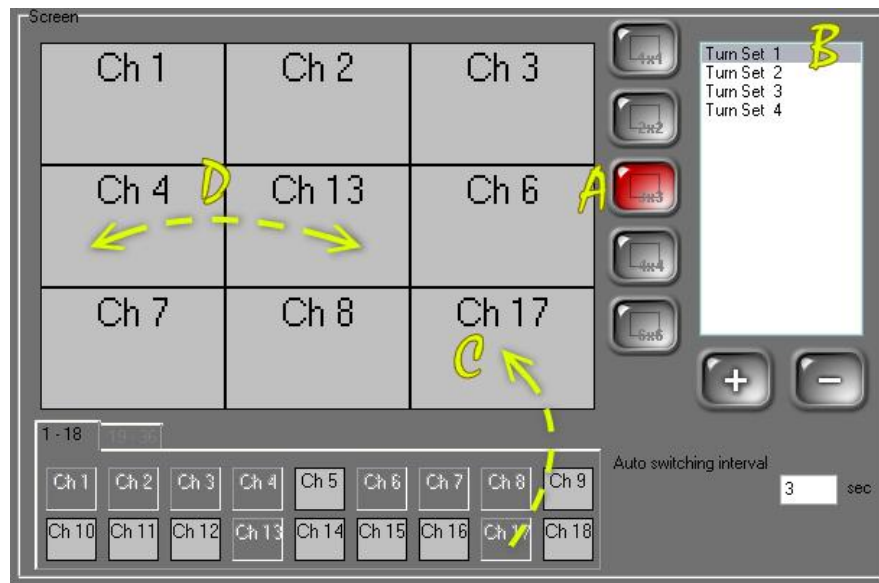
b. Select one of the turn sets. A "turn set" represents a screen style. You can arrange different channel placements in each turn set number. When channel swap starts, it follows the sequence: Turn Set1 -> Turn Set 2 -> Turn Set 3 g->...-> Turn Set 1 g....

c. Press and drag the channel number to the screen style. Take the picture above for example, we drag Ch3 button onto the screen style so that in turn one Ch3 will be displayed in turn set 1. Then, you can set turn set2 and turn set3 screen style.

d. If you need more turn sets to make up the swap click .

the existing turn set, select it and click .

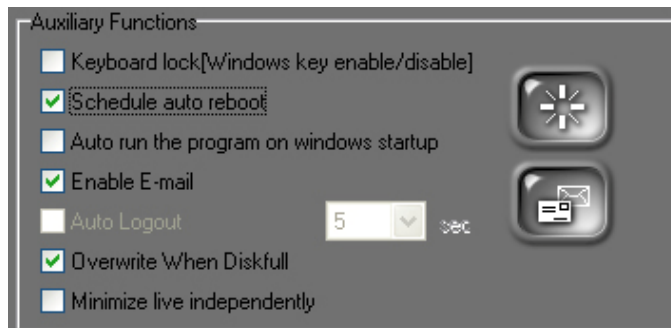
- Split screen pattern




- On 9 channel display mode, for example, press the 3x3 split screen icon.
- Select one of the turn sets. A "turn set" is a screen style. You can arrange different channel placement in each turn set number. When channel swap starts, it follows the sequence: Turn Set1 g Turn Set 2 g Turn Set 3 ->...-> Turn Set 1 g....
- Press and drag the channel number to the screen style. Take the picture above for example, drag Ch17 button onto the screen style so that in turn one Ch3 will be displayed on bottom-right place.
- On the screen style, press and drag the channel number to where you want to place it. Take the picture above for example, drag Ch4 to where Ch13 is. Then, you can set turn set2 and turn set3 screen style.

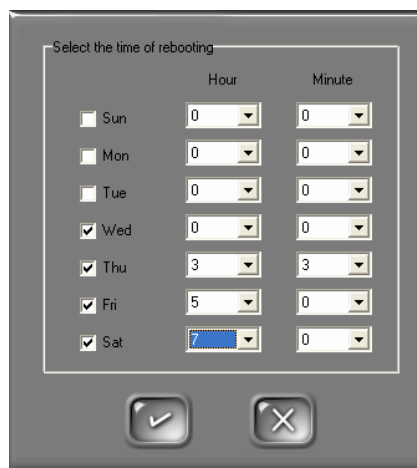
- If you need more turn sets to make up the swap click . For deleting the existing turn set, select it and click .

7. Auxiliary function





a. Keyboard Lock: If you tick the box, the application hotkey will be disabled (ex. Ctrl + Esc, Alt + Tab, Win, and Alt+F4) to avoid illegal use.


b. Schedule Auto Reboot: Click  to set up the time to reboot automatically. IPCamera recorder will also restart automatically.



c. Auto Run the Program on Windows Startup: Tick the box, and IPCamera Recorder will auto run at startup.

d. Enable E-mail: If you select to send E-mail in the "Motion Message" column, tick "Enable E-mail" here, and click  to set up the E-mail server and account information.





(i) Fill-in the SMTP server host and port. If the server need verification, tick "SMTP server needs to verify" and fill in the user account name and password. Click to  test the e-mail service.

(ii) The default value "From" is IPCameraRecorder. You can key-in any word you prefer. In "To" cloumn, key-in the e-mail address that will receive the warning mail. You can set the subject and content of the email.

(iii) By ticking "Attach Image", the snapshot will be sent with the e-mail.

(iv) Send interval

(v) If you want to send e-mail to more than one mail address, click , and then edit the e-mail address information as you did for the first one. Click  to delete the existing e-mail address from the sending list.

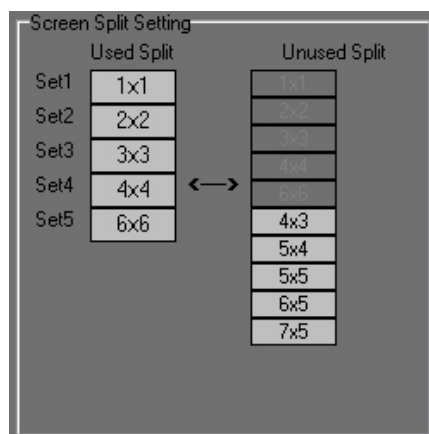
Note: The E-mail server will not send the e-mail and the attachment if the check box in the sending list is unchecked.

e. Auto Logout: If you tick "Auto Logout", the system will automatically logout when there's no keyboard or mouse action during several seconds. Use the drop-down menu to set the idle time.

f. Overwrite When Diskfull: If you tick the box, the old files will be overwritten when the disk is full. Otherwise IPCamera Recorder will stop recording when disk is full.

g. Minimize Live Independently: If you tick the box, when you press "minimize" button in the live screen, the program will be minimized to the corner of the desktop. If you un-tick the box, the program will be minimized to the system tray.

8. Screen Split Setting



The used split screen pattern will be display on the right side of live page and on the "screen setup" option. Drag the right screen pattern to left to exchange the used and unused pattern.

9. Product Information



Click the icon, for checking the software version information in the pop-up window.

10. Player



Click the icon for the playback player to be exported to your PC. the PlayerAP interface is almost the same with the playback menu of IPCamera Recorder. You can use it to playback the recording video without starting IPCamera Recorder.

B. Channel Setup: General



Click  to enter system setup page.

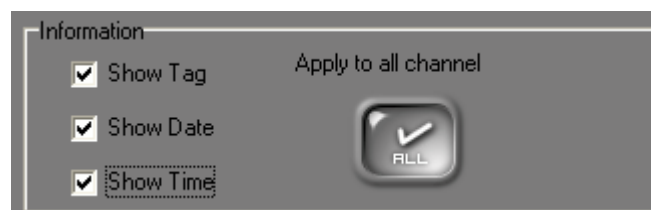
1. The Basic Setting and Image Setting had been introduced in the paragraph "[Channel Setup Page in IPCamera Recorder](#)"

2. Pre & Post Alarm Recording



Tick it to enable alarm recording, and the video will be saved when the alarm is trigger. You can adjust pre-alarm recording time and post-alarm recording time.

3. Information



The channel tag, date, and time can be displayed on the live view as watermark.

4. Display

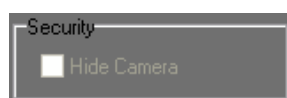


If "Display I frame only" is ticked, only I-Frame will be transferred and displayed in live view. If "Disable Digital Zoom" is ticked, the digital zoom panel will not show on bottom of the live view.

5. Audio

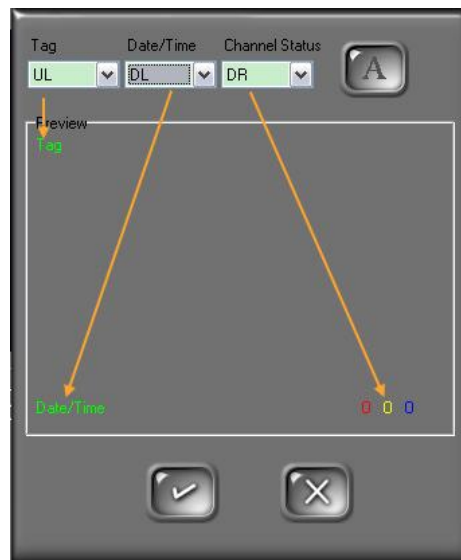
Tick it to receive audio from IP camera to your PC. The audio will be also included in the video recording.



6. Security



Tick "Hide Camera" Box so that the live video will not be display on the live screen. However, the alarm, recording, and other functions will still work. The free version of IPCamera Recorder doesn't support this function.

7. Advanced setup




Click  to setup the watermark location of the channel: Upper-left, upper-right, lower-left, lower-right. Click . You can also change the size, form, and color of watermarks.

NOTE: The advanced settings will apply to all the channels where the watermarks are enabled.

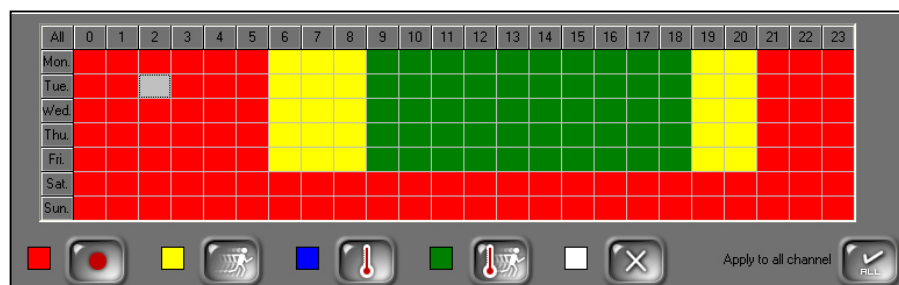
C. Channel Setup: Schedule, Motion Detection, I/O



Click  to enter the channel setup page.






1. Schedule


a. Daily Routine Schedule



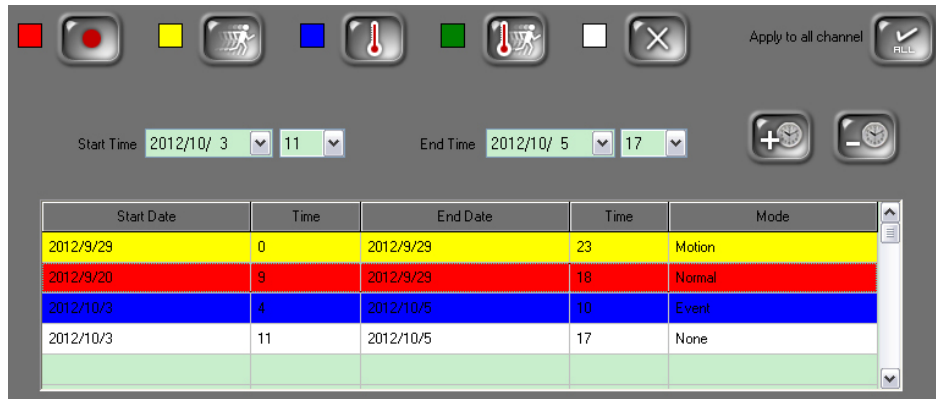
IPCamera Recorder provide different recording modes. You can arrange the timetable by yourself. Once you complete the settings in the calendar, the recording schedule will be applied to every day. Please follow the following steps:

- (i) Select the channel number you want to set up. Enter "Schedule" tab.
- (ii) Drag a period of time on the timetable, and click a recording type button to apply it to that period.

- : General recording
- : Motion detection
- : Motion with alarm detection
- : Alarm
- : No record


(iii) Using the “All” button , the timetable will be applied to all the channels.

b. Exception Time Setting



Start Date	Time	End Date	Time	Mode
2012/9/29	0	2012/9/29	23	Motion
2012/9/20	9	2012/9/29	18	Normal
2012/10/3	4	2012/10/5	10	Event
2012/10/3	11	2012/10/5	17	None

When you face special holidays or activities that need different recording type, you can use the exception time setting. The exception setting has priority over the daily routine schedule. Follow the steps:

(i) Select from drop-down menu the date and time, then click . The date will be added to the list.

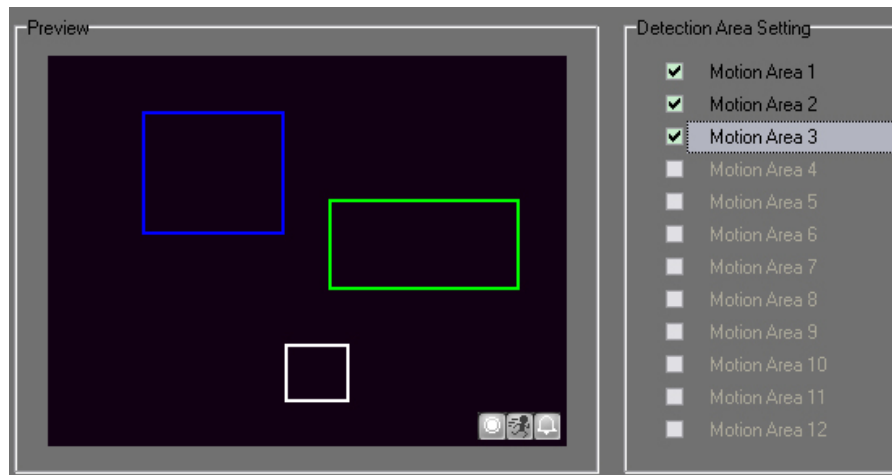
(ii) When you select one date in the list, the row will flashing. Then click the

buttons      to set or change the recording type.

(iii) If you want to delete a date or time from the list, select it and use

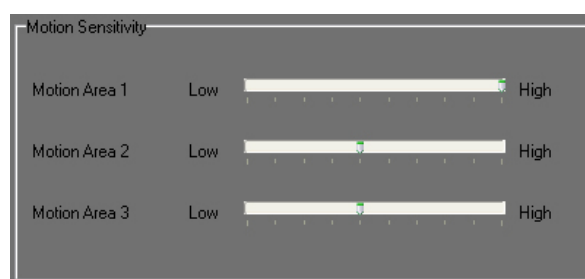


2. Motion



When the IP camera detects motion inside the set area, the icon of the channel will light to warn the user. Meanwhile, other alarm action could be executed. Follow the steps to set up motion area:

- Select the channel number you want to set up. Enter "Motion" tab.
- Tick "Motion Area" to enable the function and drag an area on the view. The selected area will be indicated in flashing frame.
- Adjust the sensitivity in the motion sensitivity column.



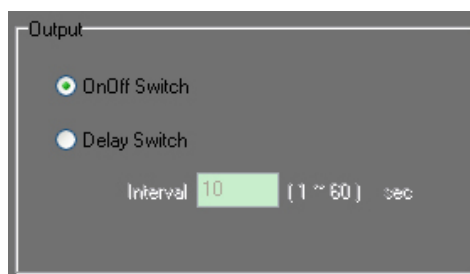
- Motion recording can be enabled in the schedule. Pre-alarm/ post-alarm recording time can be adjusted in "Pre & Post Alarm Recording". If you want to receive warning mail or warning sound, please refer to "[Motion Message](#)".

3. I/O setup

Select the channel number you want to set up. Enter "I/O" tab. The options here can work only when the connected device supports I/O functions.



To set up the actions when DI is triggered, please refer to "[Detect Setup](#)".

a. Output

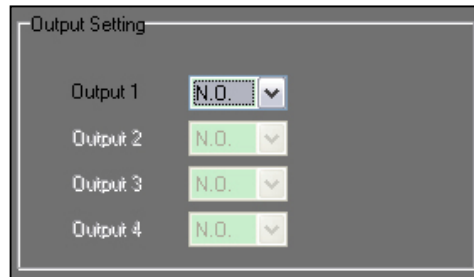


(i) Output mode

- OnOff Switch: The IP camera triggers the external device and lasts for a certain of time according to the event interval setting. You can turn off the alarm manually by clicking "off" at the right bottom of the live video page.
- Time Switch: The IP camera triggers the external device and lasts for certain of time according to the output interval setting, and the user is not allowed to break off the alarm manually.

(ii) Output test: After the external output devices is installed, you can use the "Relay Out" button  on the bottom of live video page to test if it works. Click the button , the camera will trigger the external output device. In OnOff switch mode, it will last for several seconds according to your event interval setting, or you can manually break off the output signal by clicking the button again. In Time switch mode, it will last for several seconds according to your output interval setting, and you cannot stop it manually.

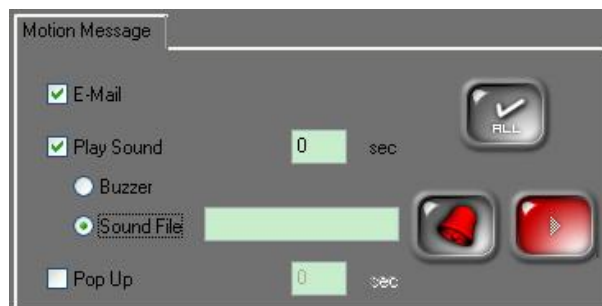
b. Output Setting



This option only works when you select "OnOff Switch" in output mode. Select N.O(normally open) or N.C(normally close) according to the external device you connect.

- N.O.: When the event occurs, DO & GND pins are connected, or COM & NO pins are connected.
- N.C.: When the event occurs, DO & GND pins are disconnected, or COM & NC pins are connected.


c. Motion Message



When the motion detection happens, several actions can be executed.

- (i) E-mail: Tick "E-mail" box, the mail server will be triggered and sends a mail to appointed mail address when motion is detected. To set up the mail server and account information, please refer to "Auxiliary Functions" in the system setup page.

(ii) Play Sound: Tick "Play Sound" box, the PC will trigger buzzer or play the sound file for warning when motion is detected. Select buzzer or sound

file, click  to set the sound file path, and set how long the sound lasts (in seconds).

(iii) Pop Up: Tick "Pop Up" box, the channel will pop-up and be displayed in full-screen when motion is detected. Set how long the pop-up mode lasts for (second).

NOTE: If you key-in "0" sec, the live view will stay in full screen mode until the user adjust it manually.

D. Channel Setup: PTZ, Panorama

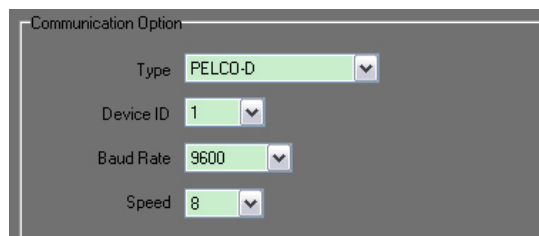


Click  to enter channel setup page.

1. RS485 Setting

Select the channel number you want to set up. Enter "PTZ" tab. The function can only work when you are connected with an IP camera supporting PTZ.

a. Communication Option

A dialog box titled "Communication Option" with four dropdown menus: Type (PELCO-D), Device ID (1), Baud Rate (9600), and Speed (8).

Communication Option	
Type	PELCO-D
Device ID	1
Baud Rate	9600
Speed	8

When you connect to a video server that is connected to an IP Camera via RS485, set up the RS485 options. The type (protocol), device ID, and baudrate must be consistent with the settings on your camera, or it might cause a controlling failure.

Speed is the moving range when you use the four-direction arrows. The bigger the value, the longer the moving range becomes.

2. PTZ setting

Only when you connect a PTZ camera and select its channel, you can see the PTZ options.

a. Preset Setup




Use the drop-down menu to select a point set. You will see live view movement to the preset point position. When the auto patrol starts, the view will move from one preset point to the next one.

The following steps will tell you how to build a new preset point:

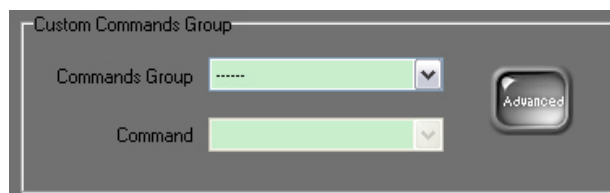
- (i) Select a preset point number.
- (ii) Set a name for the preset point.

(iii) Use the four-direction arrows and focus/zoom for adjusting the camera to shot to the view you prefer.



(iv) Click  to save it as a preset point. If it's successfully saved, the point name will be displayed in the point list.

b. Custom Command Group



IPCamera Recorder supports PTZ custom commands when you connect to a video server. This function allows the user to add or define its own commands within the provided protocol. The user can create a new protocol as well.

The free version of IPCamera Recorder doesn't support this function.




c. Auto Scan



Click  to start auto pan. Click  to stop it. The auto pan start and end point follow the auto pan settings of your camera.

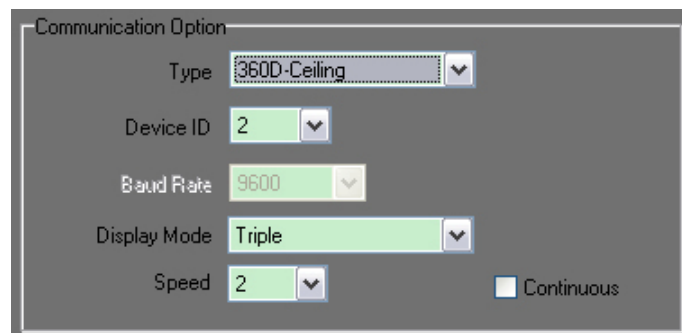
d. Auto Patrol



Click  to start auto patrol. Click  to stop it. The patrol route follows the patrol group setting on your camera. If you tick "Timer" and set it to 3 min, the software will click  the button automatically and start patrol every 3 minutes.

3. Panorama Setting

Only when you connect a hard-decoding fish eye camera and select its channel, you can see the Panorama options.



a. Type: According to your camera installing location, select "180 degree", "360 degree: Ceiling", "360 degree: Desk", or "360 degree: Wall".


b. Device ID: Select the sub screen number that you want to apply E-PTZ. The numbers and corresponding sub screens are shown in the diagram below. After you select a sub screen, you can use the 4-direction arrows to move the view to right/ left/ top/ bottom, and use the "+" "-" to zoom in/ zoom out.

c. Display Mode: There are various screen patterns for the users to choose. When you select different options, the number of split screens will change, and each sub screens will have different displaying mode and function.

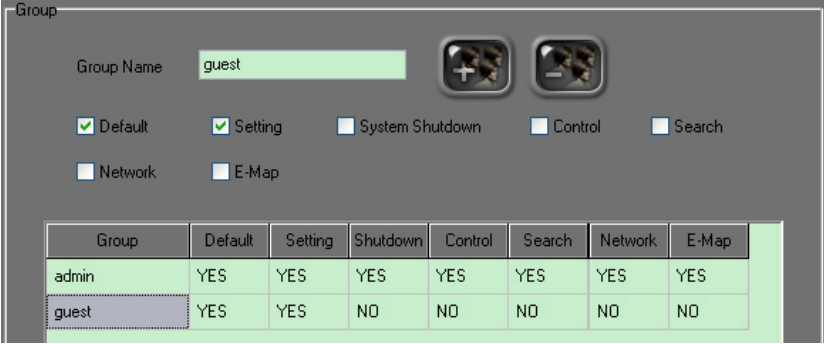
- **Panorama**: A 360 degree panorama view will show the whole scope of the camera shooting and will be displayed in a flat way. The left end point and right end point of the flat view are connected in the same place. A 180 degree panorama view scope is smaller than 360 degree and is displayed in near sphere-shape or in a flat way.
- **Source**: The source video is a panorama view displayed in sphere-shape. The users cannot do E-PTZ control on source sub screen.
- **E-PTZ**: Users can operate E-PTZ function on the E-PTZ sub screen.

e. Speed: The E-PTZ moving speed. The option is invalid if your fish eye camera doesn't support speed adjustment.

E. User Setup

Click  to enter user setup page.

1. Group



Group	Default	Setting	Shutdown	Control	Search	Network	E-Map
admin	YES	YES	YES	YES	YES	YES	YES
guest	YES	YES	NO	NO	NO	NO	NO

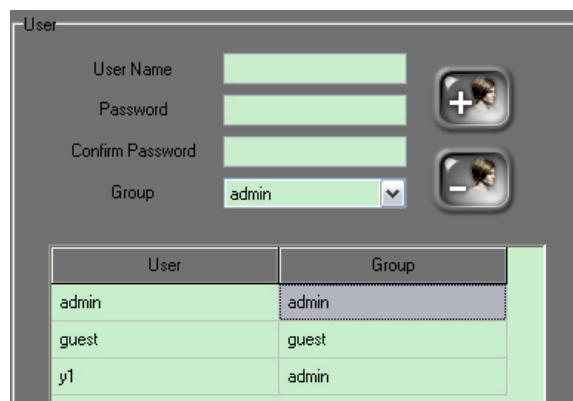
In the free version, users are not allowed to create new user groups. However, you can change the authority options of "guest" group. Click "guest" in the list, for ticking or un ticking the authority box options above.

- Default: This option has no effect whether you tick it or not.
- Setting: Call out the configuration page.
- System Shutdown: close the program.
- Control: Control the PTZ panel on the live screen.
- Search: Enter playback mode and search the recording video.
- Network: Access and log-in IPCamera Recorder via web browser or Remote Lite.
- E-Map: The authority to call out E-Map.

If someone tries to use a function that he doesn't have the authority to operate, a dialog box will pop out:





2. User




The "User" management interface includes input fields for "User Name", "Password", and "Confirm Password", a "Group" dropdown menu currently set to "admin", and two icons: a plus sign with a person icon and a minus sign with a person icon. Below these is a table with two columns: "User" and "Group".

User	Group
admin	admin
guest	guest
y1	admin

a. Add new user: Key in username, password, and select which group he belongs to, then click  to add the new user to the list.

b. Delete existing user: Select the user in the list and click  to delete it.


c. Edit username and group: Double-click the username in the list, and you can edit the name. Double-click the group name in the list to switch the group of the user.

3. To switch the current user, click  on the left-bottom of the live screen and login again.

F. Disk Setup

The content of disc setup had been introduced in the paragraph "[Set Up HDD for Recording](#)".

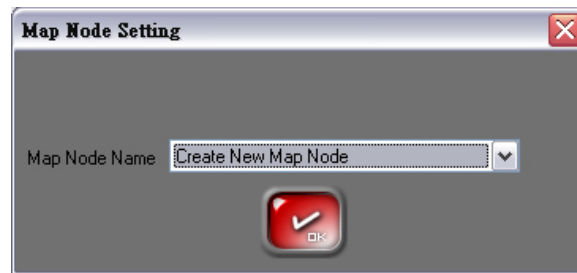
G. E-Map Setup

Click the button  to enter user setup page. Follow the steps to build E-map:

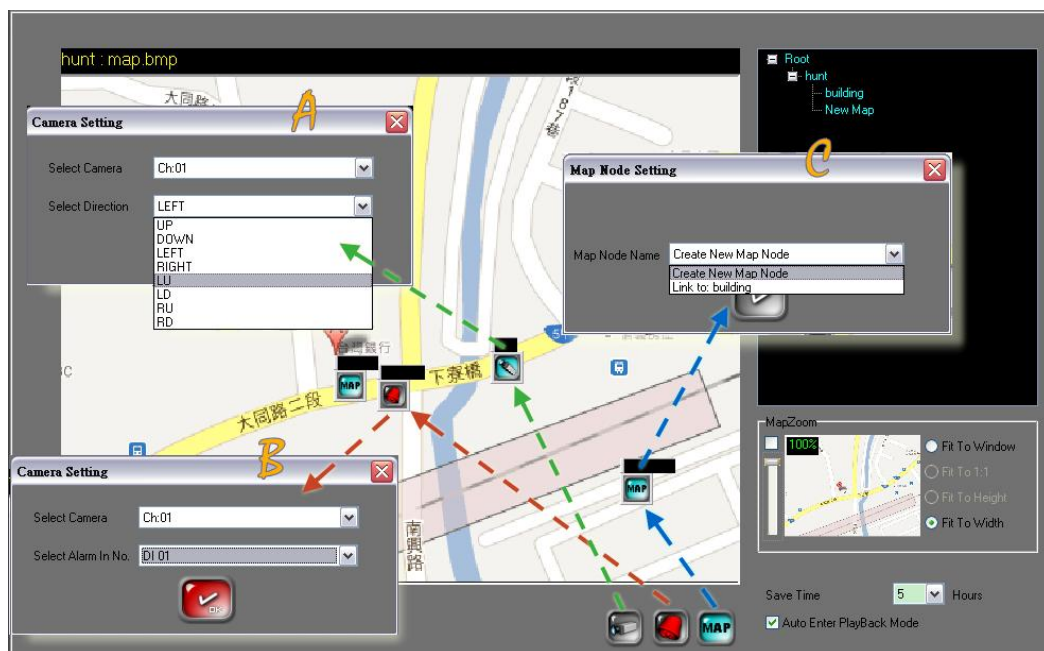
1. In the right column, you can see the tree map that lists all the maps you set. To add a new map, right-click "Root", and select "Add Map".




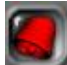
2. Select "Create New Map Node", click OK and give the path of the map file.



3. The map is loaded into E-map column. Then you can drag the devise icons and drop it to where the devises locate on the map.




a.  : Camera icon. After you put it on the map, select which channel this icon stands for, and what direction this camera is toward.

b.  : External device icon. After you put it on the map, select which camera is connected with this device to edit.



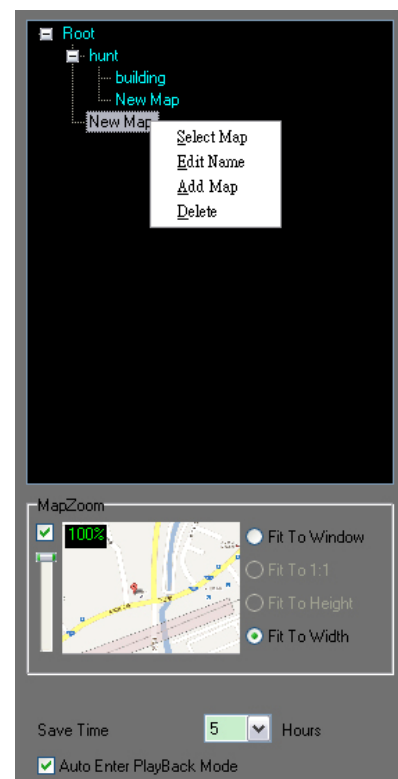
c. : Map icon. If you put the map icon on a map, it turns out to a multi-layer map. For example, on a street map, you can add a building interior map to indicate the devices installed in the building. After you put the map icon on the map, select "Create New Map Node" to add a new map file or select " Link to: (map name)" to link the icon to a map that is already loaded.

4. You can edit the points on the map by right-clicking on . Double-click the map icon for entering the map.

5. On the right column, you can check the map tree. Right-click the map, and click on "Select Map", then you can change the map picture file. You can also edit the map name, delete it, or add a new map into the map tree.

6. In "Map Zoom" column, you can adjust the zooming percentage of the map, and drag the red frame to the region you prefer.


7. Save time: The event log will be saved as a part of E-map function and be displayed on the bottom of E-map view. However, IPCamera Recorder allows up to 5000 events to be saved, and the oldest log will be deleted if the events quantity is over 5000. You can also decide the log saving time here. Give the log retention time, and the events will be deleted as time goes by.



8. Auto Enter Playback Mode: If you call out E-map on the live screen, the event recording can be automatically played when the motion detection or alarm event occurs.

9. After finishing all the settings, click  to save them.


10. Close the configuration page, and back to live screen. Now you can click

map icon  to call out the E-map you just built.



- a. When motion detection is triggered, the camera icon and alarm icon on the map will flash. Double click the icon, a small view will pops up and show the live view.
- b. The motion detection and alarm event are listed in the bottom column.
Select the event, for playback the video related to the event.

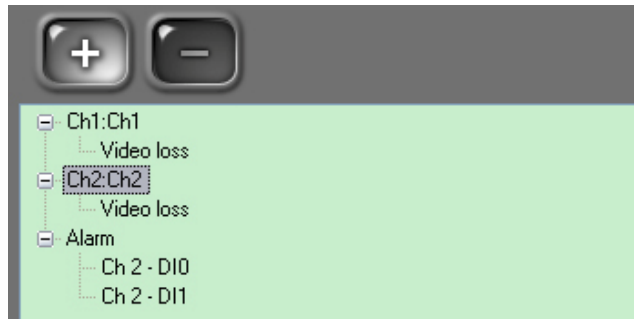
MotionEvent	AlarmEvent
2009/02/24 15:23:41 - 15:23:42 [Ch:01]	
2009/02/24 15:24:02 - 15:24:05 [Ch:01]	
2009/02/24 15:24:40 - 15:24:43 [Ch:01]	
2009/02/24 15:24:51 - 15:24:56 [Ch:01]	
2009/02/24 15:24:59 - 15:25:00 [Ch:01]	
2009/02/24 15:25:00 - 15:25:03 [Ch:01]	
2009/02/24 15:26:35 - 15:26:36 [Ch:01]	
2009/02/24 15:28:05 - 15:28:07 [Ch:01]	
2009/02/24 15:28:08 - 15:28:12 [Ch:01]	

H. Detect Setup

Click t  to enter detect setup page.

You can select actions as “send E-mail”, “play sound”, “pop up”, and “go to preset”. For example, when video loss occurs or DI is triggered, the actions you select will be executed. Please follow the steps:

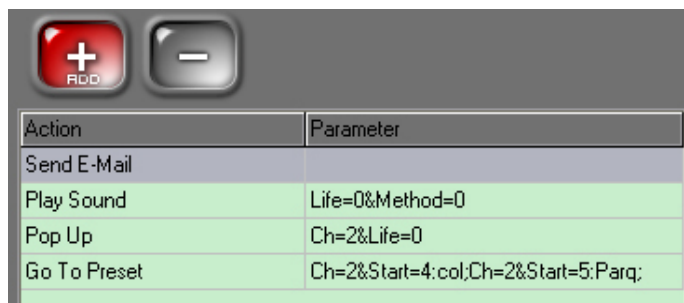
1. In the tree menu, select the channel number, press  and select “video loss” to enable video loss detection for that channel. Select “Alarm”, press  and choose the channel and DI number to add to the tree menu.



2. When you click the detection item (video loss or DI) in the tree menu, the corresponding actions will show on the right column. To add the actions, click



and select one or several actions from “send E-mail”, “play sound”, “pop up”, and “go to preset”.



a. send E-mail



When video loss is detected or DI is triggered, a mail will be sent to appointed E-mail address.

To set up the mail server and account information, please refer to "[Auxiliary Functions](#)" in the system setup page.

b. play sound

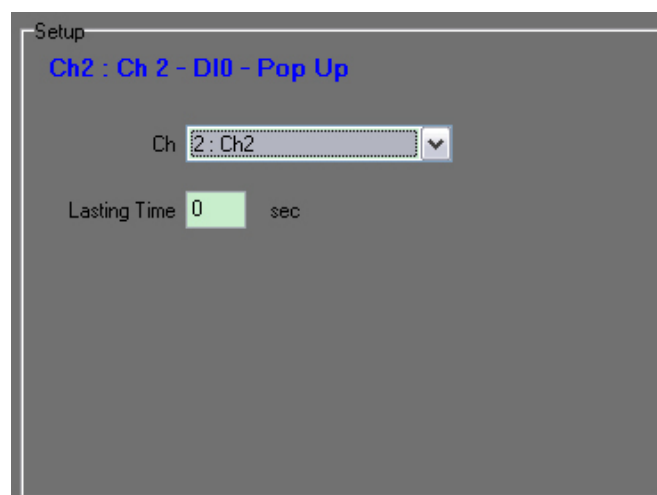


When video loss is detected or DI is triggered, the PC will play sound for warning. You can choose buzzer sound or to play a sound file in your PC.

Click  to set the sound file directory, and then you click  to test it.


c. Pop up

When video loss is detected or DI is triggered, one channel can pop up to full screen. Select the pop-up channel and give lasting time.



d. Go to preset

When video loss is detected or DI is triggered, the view can be moved to preset point if it's a PTZ camera. Select the PTZ channel and the preset


point, and then click  to add the preset point to the list.

Setup

Ch2 : Ch 2 - DI0 - Go To Preset

Ch 2 : Ch2

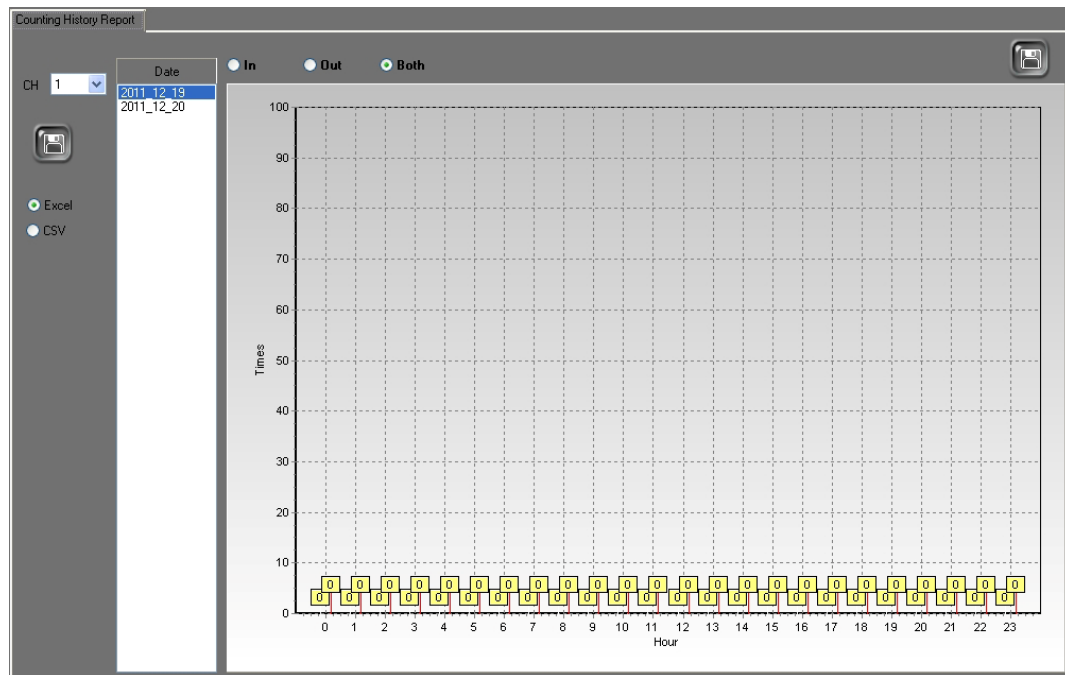
Preset 4:col

Ch	Preset
2	4:col
2	5:Parq



I. Report

Click  to enter report page.




If you connect a camera with IVA (intelligent video analysis) function, you can check a people counting report. The counting history report helps the user to manage and understand the trends and patterns that affect the everyday operation information.

Select the channel and date to view the counting information. The “In”, “Out”, and “Both” counting result can be display separately.

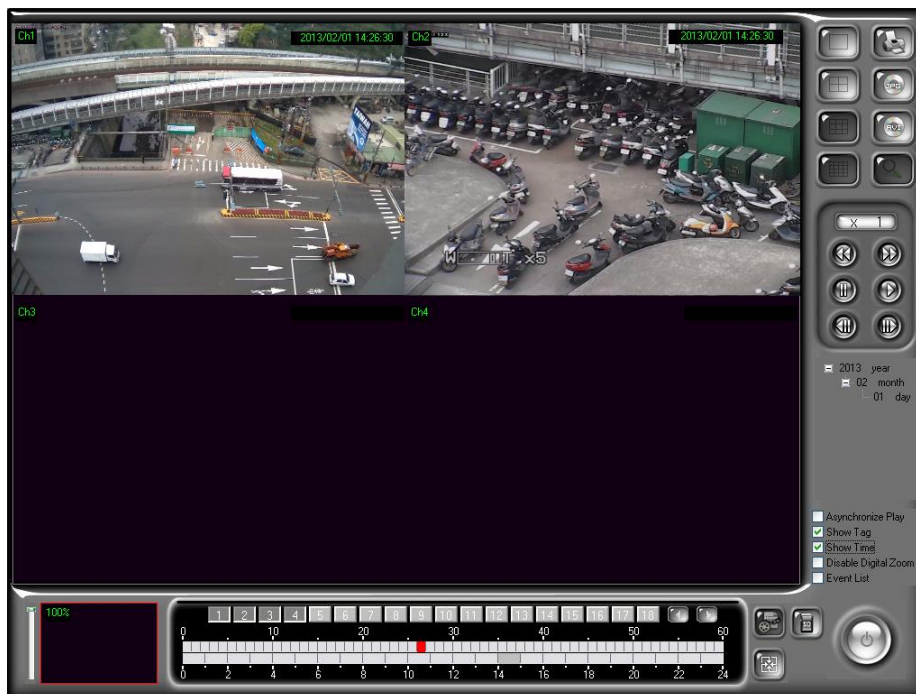
To export the counting data, select “Excel” or “CSV” in the left column and click the icon  to save to your given directory. You can also click the icon  on the top-right to save the chart as a .bmp picture file.

VII. Video Playback

Click  for calling out the playback page.

In this chapter, we will introduce the playback interface, related functions as well as video backup procedure.

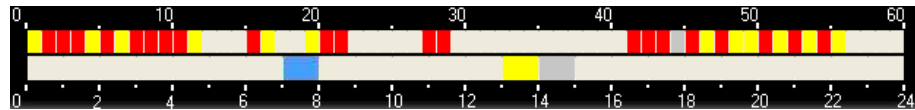
A. Playback









1. On the right column, the date list shows the days that there's video recording data. Select the date you want to execute playback.
2. On the bottom column, select the channel you would like to play. You can select one channel or several channels simultaneously. This software support up to 4 channels playback simultaneously.



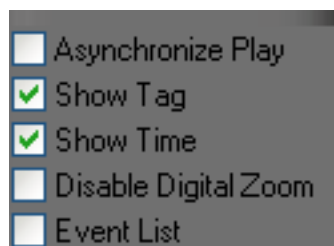
3. On the bottom column, the time bar indicates the recording status in your selected day.



- No color: No recording.
- Red: Normal recording.
- Yellow: Motion recording.
- Blue: Alarm recording.
- Gray: The period you select to play.

4. Use the control buttons     to play, pause, fast forward, and rewind. Press the fast forward button repeatedly to increase the speed multiplier up to 32x. Click   to jump to previous/ next frame.

5. Other options



- Asynchronized Play: Enable each channel to play the video of different date and time.
- Show tag/ Show time: show tag & time as watermark on each channel.
- Disable Digital Zoom: Hide the zoom panel and display the video in original size.

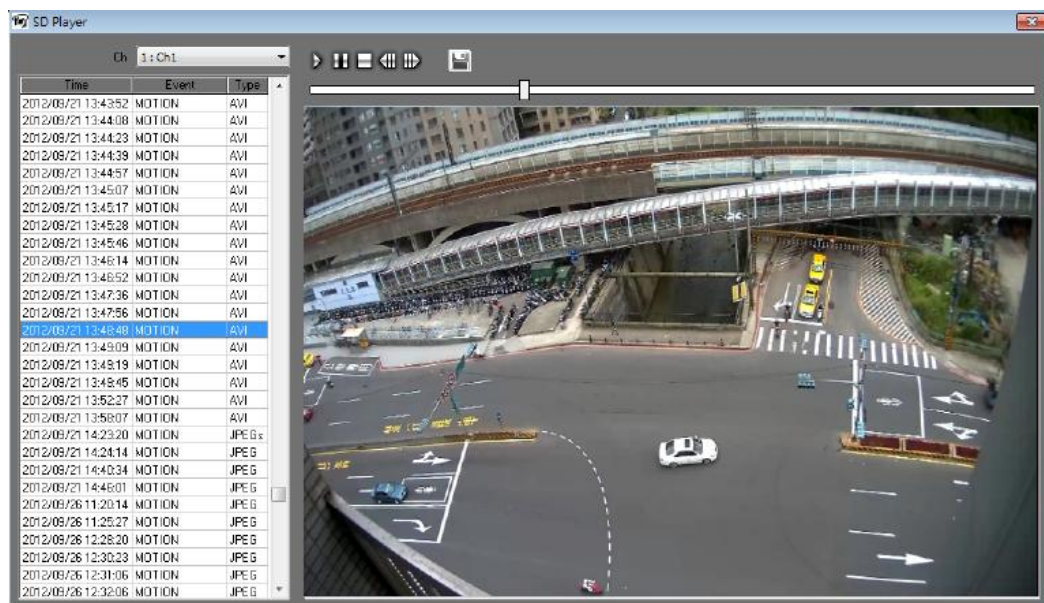
- Event List: Call out the event log.




- : Video List. The free version of IPCamera Recorder doesn't support this function.





- : Playback SD. This button is used for playback the video on the SD/ Micro SD card that is installed on the camera. Click it to call out the SD Player.



Select the channel number with the SD/ Micro SD card installed. The time point and type of the video / snapshot stored in card will be listed on the left column. Click one of the file, the video/ image will be played on the right column.

The buttons  from left to right respectively are play, pause, stop, playback frame by frame, and play frame by frame.

Click the button  to export the file from card to your PC.


-  : Refresh. When you stay on the playback screen, the time bar will not refresh itself automatically. If IPCamera Recorder keeps recording when you are on the playback screen, click this button to refresh and a newest video record will be added to the time bar.

B. Export Video


During the playback, you can take a snapshot or video clip and export as a .jpg or .avi file.

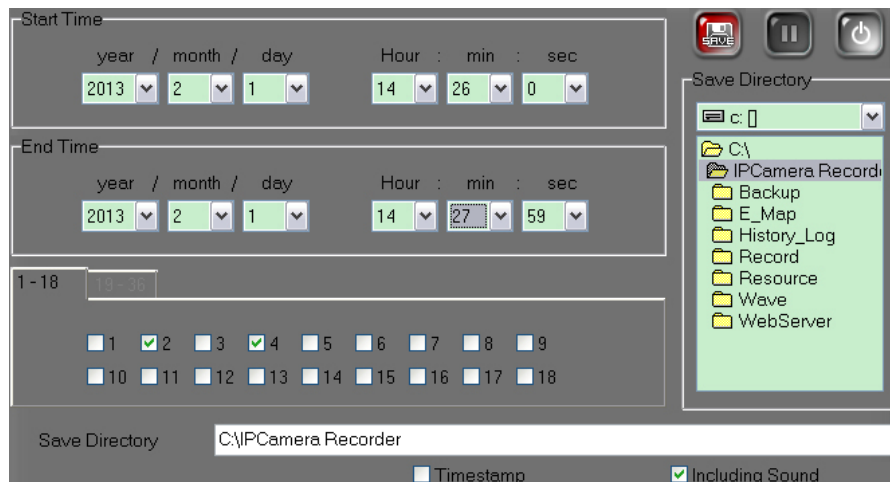
1. Snapshot

To avoid errors, it is recommended taking snapshots under a single channel view. If you are under split screen view, click on the channel that you want to capture. The channel will be indicated with a white frame.



Click the JPG icon , and set the saving directory. The picture file will be saved to the given folder. The file name will be as “(channel number)_(video date)_(video time) .jpg”.

2. Clip and export video

a. Click the AVI button . The following dialogue box will pop up.




b. Select start and end time, and the channels you want to export. If you select multiple channels, the exported video will be created into several files, each file including one channel video. In the "Save Directory" column, use the drop-down menu to select the disk and double click the folder name to give the saving directory. You can also choose to include timestamp and sound in the video.

c. Click  for start exporting the video. The "Progress" column shows the processed frames and time. Click  for pausing the video exporting.

d. The exported video file can be opened by any player with an AVI decoder.

3. Print the screen



To avoid errors, it is recommended to print under a single channel view. If you are under split screen view, click on the channel that you want to capture. The channel will be indicated with a white frame.

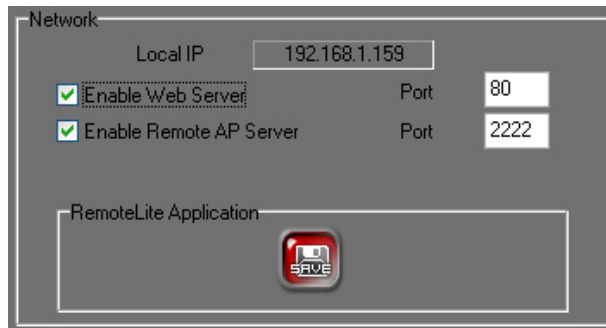
Click Print button , and select your printer, the picture will be printed out.

VIII. Remote Monitor

The user can use webpage browser or Remote Lite program on another PC to access IP Camera Recorder and watch the same live video with the local user.

A. Live Monitoring via Web Browser

1. Click the configuration button  to call out the setup page. Click  to enter the system setup page. In the "Network" column, tick the box "Enable Web Server". The default port is 80, you can change it as well.



The screenshot shows a "Network" configuration window. It contains a "Local IP" field with the value "192.168.1.159". Below this are two checked checkboxes: "Enable Web Server" and "Enable Remote AP Server". To the right of these checkboxes are "Port" fields with values "80" and "2222" respectively. At the bottom, there is a "RemoteLite Application" label and a "SAVE" button.

2. Start your web browser, and access the IPCamera Recorder local IP address. For example, if the local IP address is 192.168.1.159 and the web server port is 90, key in "http://192.168.1.159:90/" in the address bar of browser.

Note: For the Windows Vista/ Win7 user, please right click on the web browser icon and select "Run as administrator" to start the browser.



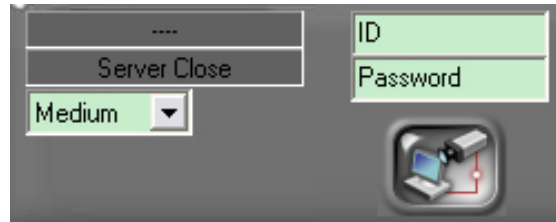
3. You can switch the language by the drop-down menu on the left. Click "Online Monitoring" and you can see the live screen of IPCamera Recorder.



4. In the bottom of the screen, key-in the username and password, and then click



to log-in. You can adjust the transmission quality of the live image on the drop-down menu. "Fast" means the live video will be compressed to a smaller size and occupy less bandwidth to transmit.



5. Now you can see the live video on the screen. If not, please try and check the steps in the following paragraph: [Web Browser Setup and ActiveX](#).

B. Web Browser Setup and ActiveX

When viewing the camera video via IE for the first time, it will ask you to install the ActiveX component. As shown in the picture, right-click the warning message and select "Install ActiveX Control".



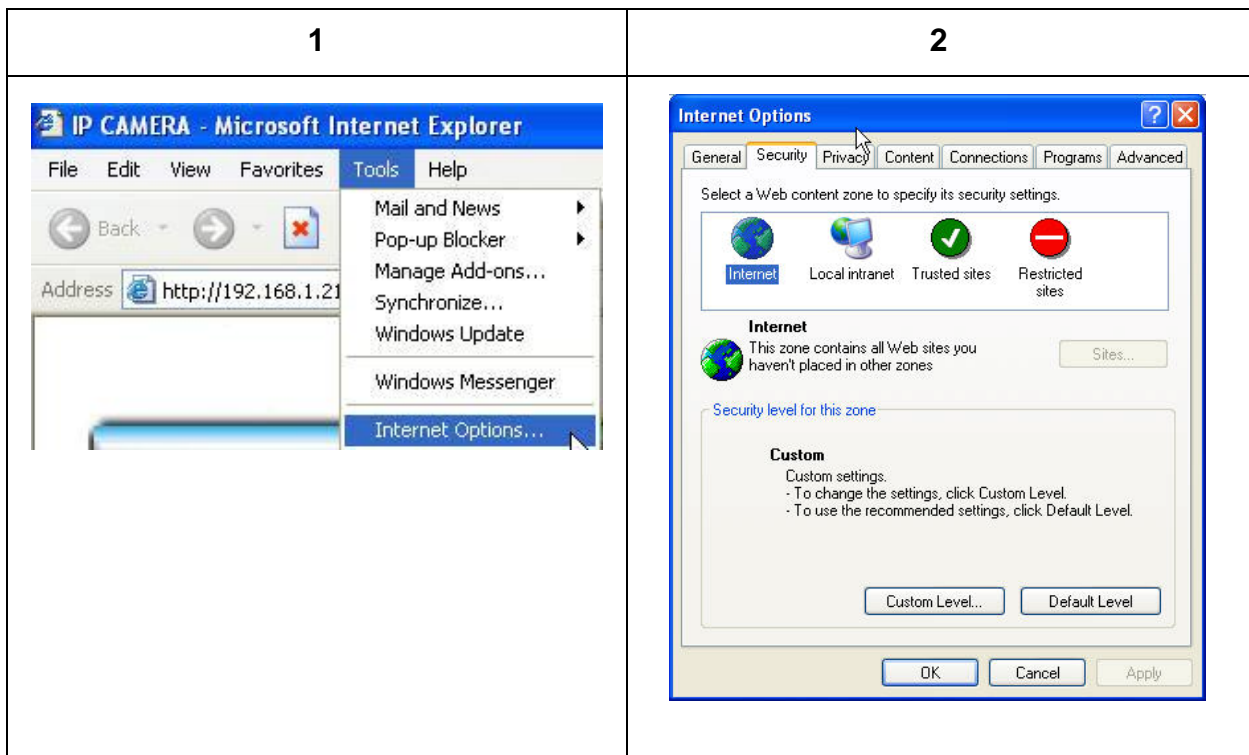
1. If the installation fails or the warning message does not appear, please check the security setting for the IE browser.

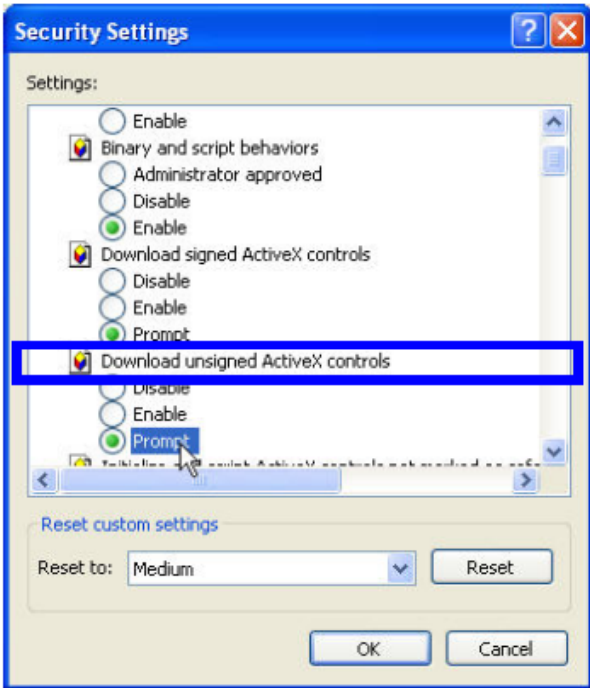
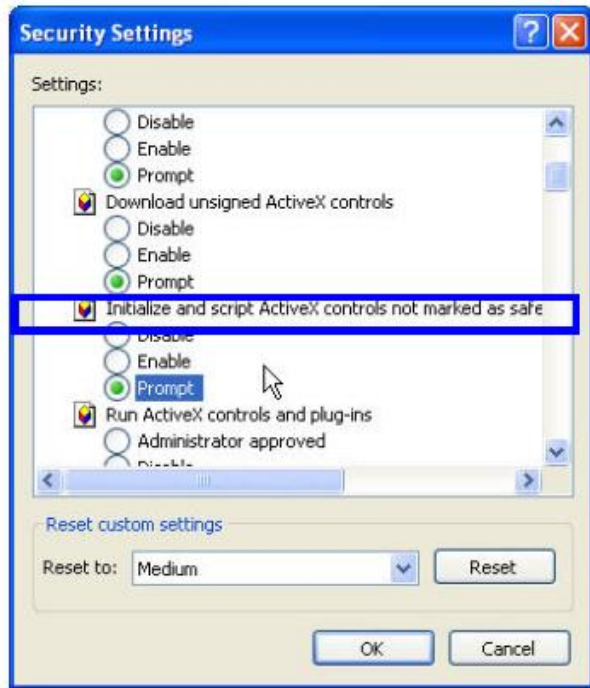
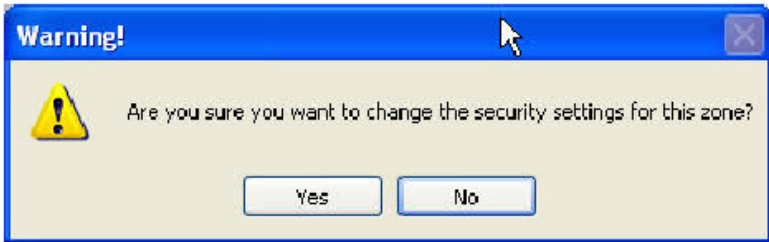
Please go to "Tools → Internet Options... → Security Tab → Custom Level → Security Settings", and set the four following options to "Prompt" or "Enable":

"Download signed ActiveX controls" "Download unsigned ActiveX controls"
"Automatic prompting for ActiveX controls"

"Initialize and script ActiveX controls not marked as safe"

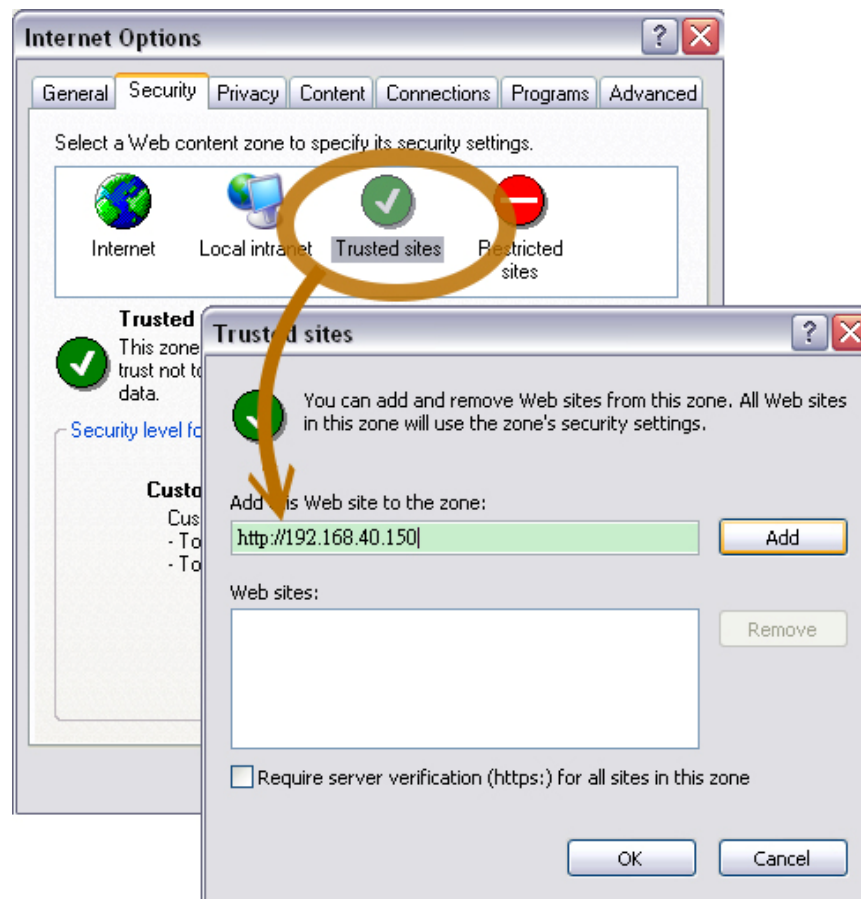
After you change the settings, close the browser and start it again.



3	4
	
5	
<p>When popup the following dialogue box, click “Yes”.</p>	
	



2. You can choose another way. Go to: IE→Tools → Internet Options... → Security Tab → Trusted sites → Add the IP address and click "OK".

In the site list you can key one single IP address or a LAN address. For example, if you add "192.168.21.*", all the IP address under .21 LAN will be regarded as trusted sites.

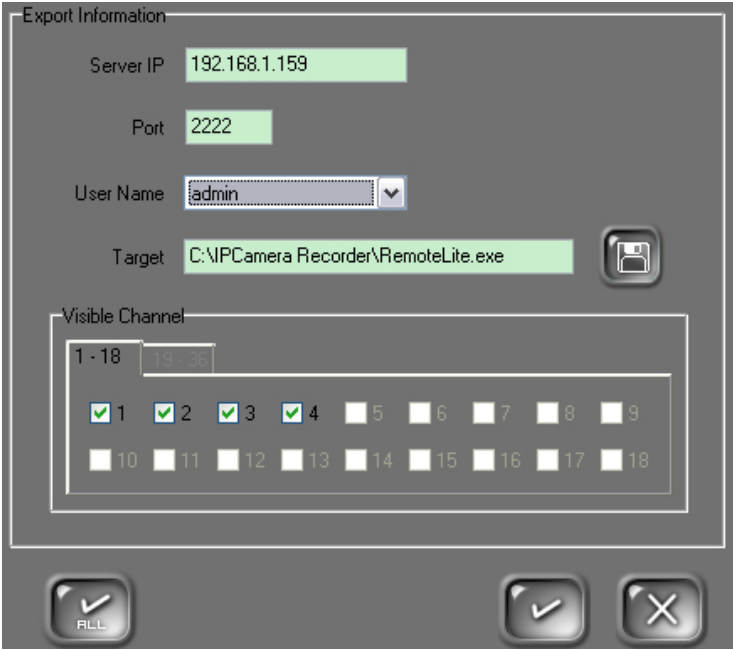


C. Live Monitoring via Remote Lite

Remote Lite is an independent software for live-viewing only. The program can be exported from IPCamera Recorder, and can be copied to other computers.

1. Click the configuration button  to call out the setup page, and click  to enter system setup page. In the "Network" column, tick the box "Enable Remote AP Server". The default port is 2222, but it can be changed.

2. Click the button  in the "RemoteLite Application" column. The exporting setting page will pop out.



The dialog box titled "Export Information" contains the following fields and controls:

- Server IP: 192.168.1.159
- Port: 2222
- User Name: admin (dropdown menu)
- Target: C:\IPCamera Recorder\RemoteLite.exe (with a file icon button)
- Visible Channel: A section with a range selector "1 - 18" and "19 - 35". Below it is a grid of checkboxes for channels 1 through 18. Channels 1, 2, 3, and 4 are checked.
- At the bottom are three buttons: "ALL" (with a checkmark), a button with a checkmark, and a button with an "X" (cancel).


a. Sever IP: The local IP address of IPCamera Recorder.

b. Port: The access port of the server. The default port is 2222.

c. User Name: Select a username for login. Note that if you select the user that does not have the authority to access the IPCamera Recorder via Internet, you will not see any live view on the Remote Lite. About the authority setting, please refer to "[user setup](#)".

d. Visible Channel: Tick the channel that you want to show on the RemoteLite. The unselected channels will be marked as private channels

and displayed no live video. Click  to select all the channels, and click it again to cancel all channels.


e. Click  to set the exporting directory.

f. After completing the settings, please click "OK" to export the RemoteLite program to your given directory. A success message box will pop up.






3. Find the exported Remote Lite program and open it. For Windows Vista/ Win7 users, right-click the Remote Lite icon and select "Run as administrator" to start the program. The language of Remote Lite follows your OS language.



4. Click  on the bottom to get the connection. The username and password is not required because they had been logged in the program when you select the username on the exporting setting page. You can adjust the transmission quality of the live image on the drop-down menu. "Fast" means the live video will be compressed to smaller size and occupy less bandwidth to transmit.



5. Use the buttons  to change the split screen pattern. HVM-04IAF supports up to 4 channels, so the other channels will display "Private Channel". Click  to minimize the program into the system tray. Click  to close the program.

IX. Configure Tool

Select "Start" -> "Program" -> "IPCamera Recorder" -> "Tools" -> "Configure tool".

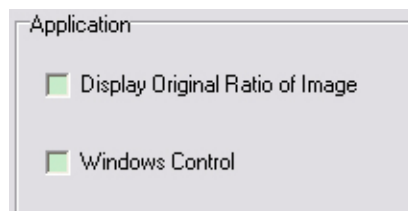
In Windows Vista/ Win7, right-click on the desktop short cut or configure tool, then select "Run as administrator" to start the program.

A. Channel

Please refer to "[Connect with IP Cameras or Video Servers](#)".

B. System

1. Application



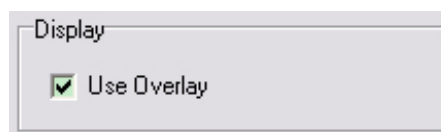
a. Display Original Ratio of Image

Enable this function; the image will keep original aspect ratio itself when image aspect ratio is different from split screen. Disable the function, the image will be adjusted to full of split screen.

b. Window Control

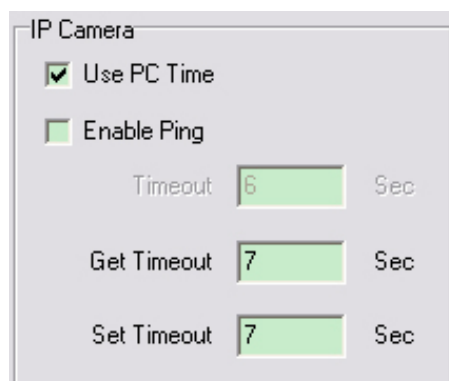
This function is only available on the monitor with a resolution larger than 1024 x 768. This function cannot be combined with “Auto Adjust Resolution”. When this function is enabled and the monitor resolution is over 1024 x 768, the user is allowed to drag the window to the proper position.

2. Use Overlay



Overlay mode can reduce the PC loading, and help keeping good video performance. Disable the overlay function if your graphic card doesn't support the function.

3. IP Camera



a. Use PC Time

By enabling this function; the video recording time will be based on the PC time setting. By disabling this function, the recording time will be based on the devices (IP camera) setting.

b. Enable Ping

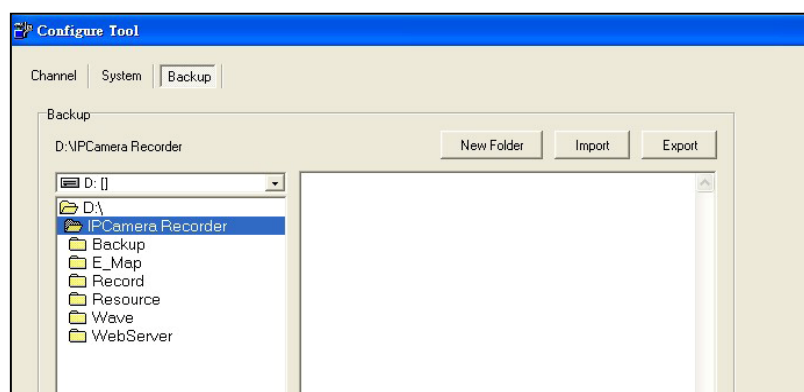
By enabling this function, IPCamera Recorder will ping the IPCam / video server before it tries to connect with it. If the camera you want to connect is not in the LAN or does not exist, it will take long time to wait for an answer. If we ping the camera instead, we can know in a short time whether the camera exists. Sometimes the cameras are protected by a firewall and the ping function is prohibited, for those cases disable this function.

c. Get Timeout / Set Timeout

When a command sent from PC to camera and got no feedback in the appointed "timeout" second, the software considers the device give no answer and report it to the users. This function can shorten the waiting time for a device answer. However, if your Internet is not stable, a too short "timeout" setting may cause misjudgment.

C. Backup

The IP Camera Recorder configuration file can be saved to your PC. It can be used to maintain the software, or be copied and applied to another IPCamera Recorder.



(i) To export the setting file, select directly the file saving, and click "Export".

(ii) To import the setting file, find the file in your computer, and click "Import".

X. Software Specification

Main Features:

- Up to 36 Channel video recording software for HUNT IP security devices
- H.264/ MPEG-4/ MJPEG compression format
- 5 different recording modes to fit your needs
- Video search by time
- Video export: AVI, JPEG
- Record video and audio
- Live window PTZ control interface
- Live/Playback digital zoom control interface
- Dual monitor
- E-map
- Audio broadcast
- Channel rotation
- Email with picture file
- Multi e-mail Group list
- Pre/ Post alarm
- Attached channel function without costing network bandwidth
- Remote playback SD card
- Multiple remote site and user solution
- Remote web browser
- Remote lite program

Video Monitoring	
Video Channel	36
Real-Time Monitoring Mode	1, 4, 9, 12,16, 20, 25, 30, 35, 36
Channel Swap	Yes
Channel Rotation	Yes
Full Screen Monitoring	Yes
Compression Format Support	H.264, MPEG-4, MJPEG

Supported Device	HUNT IP Camera, Video Server, DVR, Axis, Sony
DVR Control Panel	Yes
PTZ Control	Yes
Digital Zoom Control	Yes
Dual Monitor	Yes
E-Map	Yes
Video Setting	
Video Recording Mode	Schedule, Motion, Alarm, Event, Manual
Recordede Video Resolutions	Up to 5 Megapixel
Video Quality Setting	Best, High, Standard, Medium, Low
Audio Record	Yes
Pre/Post Alarm Recording	Yes
Motion Detection	Yes, 3 areas
Overwrite Data When HD is Full	Yes
E-mail Function	Yes, triggered by motion & alarm
E-mail with Picture	Yes
Show Tag, Time & Date on Video	Yes
Video Playback	
Multi-Channel Playback	Yes (Up to four channels)
Video Search	By time
Video Export Format	JPEG, AVI
Digital Zoom Control	Yes
Image Print	Yes
Frame Step Forward & Backward	Yes
Playback Forward & Backward	1x, 2x, 4x, 8x, 16x, 32x
Configure Tool	
Device Search	Yes
Channel Setting	Yes
Configuration Import/Export	Yes
Time Synchronization	Yes
Adjust to Default Resolution Automatically	Yes
Use Overlay	Yes
Windows Control	Yes
Security	
Security setting	Yes, user and group

Client system	
OS	Windows 7/ Vista/ XP/ 2000
Hardware	
Suggested	CPU: Intel Core 2 Quad Q6600 or above Memory: 2GB VG. Card: 256 MB External Graphic Card or above Monitor Resolution: 1024 x 768 File System: NTFS
Minimum (Suitable for 36CH CIF Resolution)	CPU: Intel Pentium 4 2.0G Memory: 1GB VG. Card: 128 MB External Graphic Card Monitor Resolution: 1024 x 768 File System: NTFS

*SPECIFICATIONS ARE SUBJECT TO CHANGE WITHOUT NOTICE.